

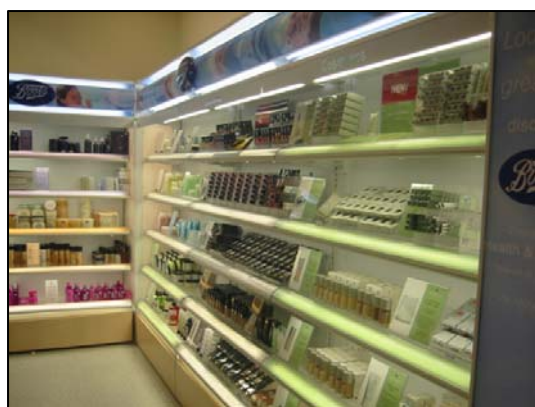


# Fastrak Retail Illuminator™ Series

Fastrak.Inspire

## Retrofit Shelf-Edge Retail Display Lighting

With our easy to install, patented cam-lock system, the Illuminator uniquely directs theater-style lighting to the face of the products, drawing shopper attention, promoting increased handling, and increasing sales. A major design innovation, the Illuminator installs on the shelf edge without tools and provides easy access to lights and light fittings to keep installation and maintenance costs down.



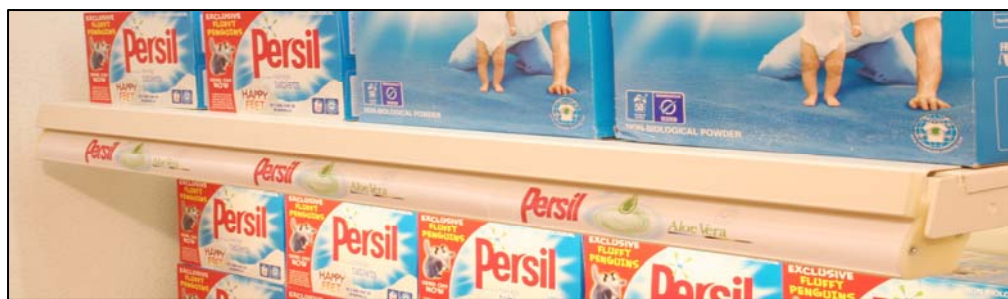
Drugstore Installation

This retail-tested lighting system attaches to the shelf- edge of almost any standard metal gondola shelf without tools and provides easy access to change bulbs or replace light fittings to keep installation and maintenance costs in check.



Illuminator with 2.5" Backlit Graphics Channel

Bring flexibility to your lighting design and an exciting fresh look to existing shelves. Each Fastrak Illuminator in the series can be relocated to maximize sales anywhere in the store. Available in custom or standard 3ft and 4ft lengths, comes with a 2.5" lit ticket strip option or in our economy 1.5" version. Uses highly efficient T5 light fixtures.



Eco-Illuminator

Fastrak Retail In-Store Interactive Media

Fastrak Retail blends technology with the retail environment to enhance the shopping experience and increase sales.

# The Illuminator™ Specifications

Effective, flexible retail display lighting that retrofits light to any metal shelf. Better Lighting, Better Profits!

- Clip it on, plug it in, light it up!
- No tools or de-merchandising
- Create focal points
- Engage customers
- Enhance product appearance
- Increase handling
- Drive Sales

## North America:

Fastrak Retail  
North America  
11508-H Providence Rd  
#204  
Charlotte, NC 28173  
T: 704-998-3565  
F: 704-849-7062

[sales@fastrakretail.com](mailto:sales@fastrakretail.com)

## Europe & Asia:

Fastrak Retail UK Ltd.  
Calamine Street,  
Macclesfield,  
Cheshire.  
SK11 7HU

T: +44 (0) 870-428-6171  
F: +44 (0) 870-428-6172

[info@fastrakretail.com](mailto:info@fastrakretail.com)



**Backlit Illuminator**



**Eco-Illuminator**

- Scratch resistant anodized steel finish.
- Custom colors and sizes available.
- End-caps included for single shelf assemblies.
- Patented Cam-Locking System for no-tools required quick installation.

Product Number	Illuminator's for Standard Brand Metal Gondola Shelving - Product Description
FSK/BK/LT/36	3ft. with backlit 2.5" graphics channel
FSK/BK/LT/48	4ft. with backlit 2.5" graphics channel
FSK/ECO/1M/36	3ft. ECO-version 1.5" non-backlit graphics channel
FSK/ECO/1M/48	4ft. ECO-version 1.5" non-backlit graphics channel
FSK/FR/TKT/36	3ft. 1 1/4" add-on, clear ticket strip for pricing and barcodes
FSK/FR/TKT/48	4ft. 1 1/4" add-on, clear ticket strip for pricing and barcodes
FSK/IPS/60	5ft. Integrated Power Strip for Power down the Gondola
FSK/IPS/RCL	Bulk Pack Receptacles for Power Strips
Call us	Shelf Management Options Available - Too many to list here

